



# Multi Hz - 16 Channel Transmitter

Ref 2007350 (white)  
Ref 2007351 (silver)  
Read instructions carefully before use.

06-17-2009

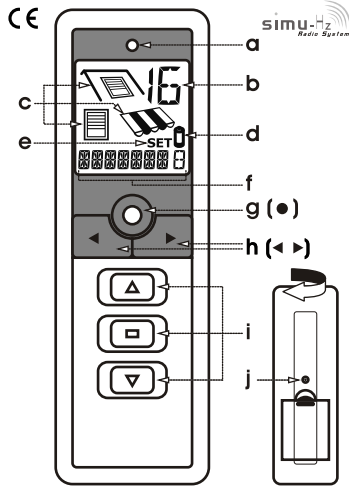
This device complies with Part 15 of the FCC Rules. Operation is subject to the following conditions

- This device may not cause harmful interference and

- This device must accept any interference received, including interference that may cause undesired operation

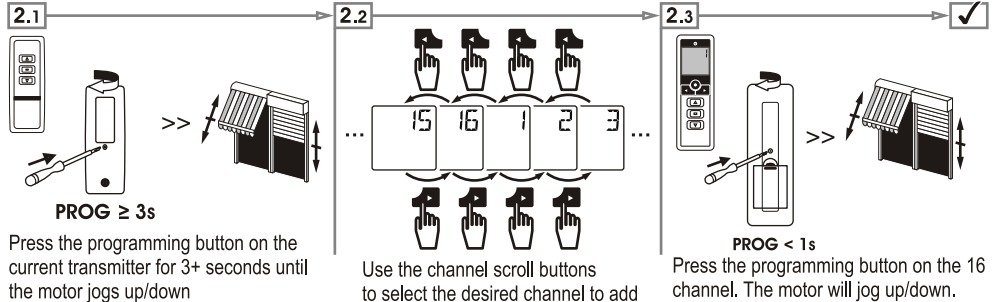
Warning! Changes or modifications not expressly approved by the manufacturer could void the users authority to operate the equipment.

## Layout

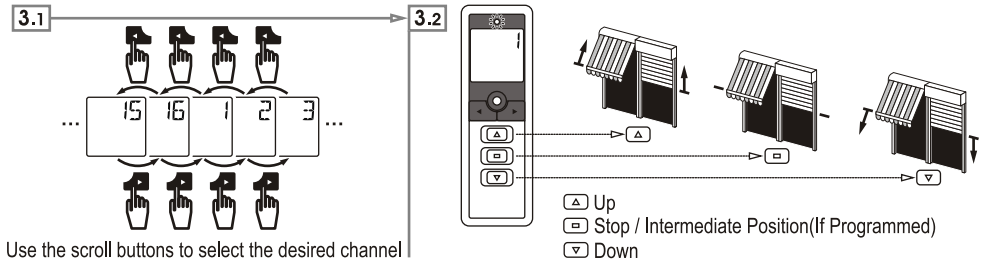


- a - Transmit LED
- b - Channel 1-16
- c - Product Icon
- d - Low Battery Icon
- e - Set Icon (labeling channels)
- f - Channel Name
- g - Validation Button
- h - (Channel) Scroll Buttons: ◀Down Up▶
- i - Up/Stop/Down
- j - Programming Button

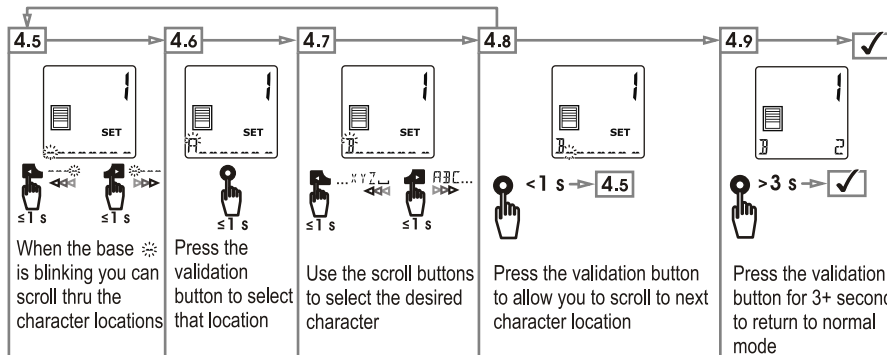
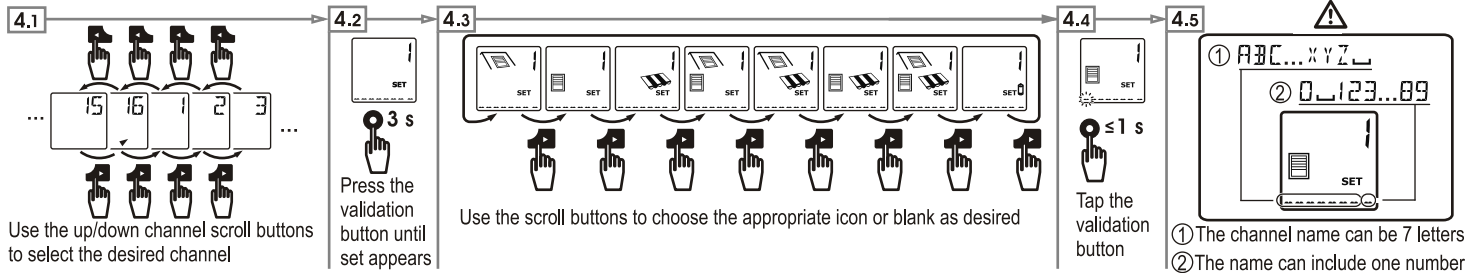
## Programming the 16 channel transmitter to a motor with an existing transmitter



## Normal use of the transmitter



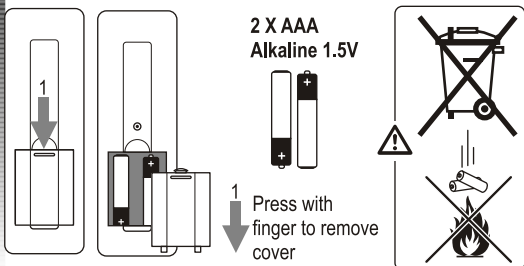
## Programming channel names and selecting product icons



### Notes:

- 1) Pressing the Up (▲) Stop (□) or Down (▼) button will take you out of channel name / icon selection mode.
- 2) For further motor programming functions please see the Hz02 Quick Reference Guide

## Replacing batteries



## Technical characteristics

